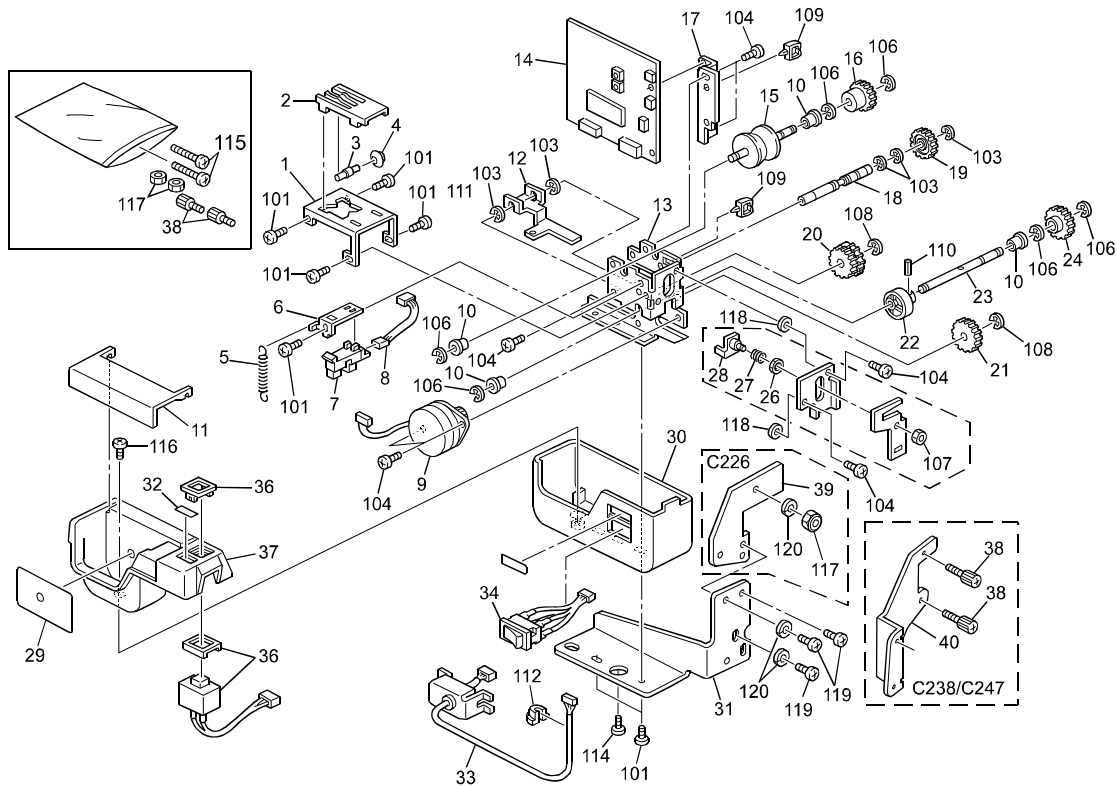


Model: PRIPORT PINKGOLD/PGB4	Date: 21-May-03	No: M-C238-020
Modified Article: Tape Marker (Dispenser) component parts	Prepared by:	
From: Priport Service Planning Section	H. Onodera	
Classification:	<input checked="" type="checkbox"/> Parts catalog correction <input type="checkbox"/> Vendor change <input type="checkbox"/> To meet standards <input type="checkbox"/> To facilitate assembly <input type="checkbox"/> To improve reliability () <input type="checkbox"/> Part standardization <input type="checkbox"/> Other ()	
Model Name:		
PINKGOLD:	Ricoh JP3000/JP3800, Gestetner 5430/5428C, RexRotary 1330, nashuatec CP430, Savin 3260DNP, Standard SD370, Lanier LDD030	
PGB4 (China only):	Ricoh JP2800, Gestetner 5425C	

Please add the following components for the optional Tape Marker (dispenser) to your Parts Catalogs, as these were missing from the catalog.

PARTS CATALOG (C532)



Model: PRIPORT PINKGOLD/PGB4

Date: 21-May-03

No: M-C238-020

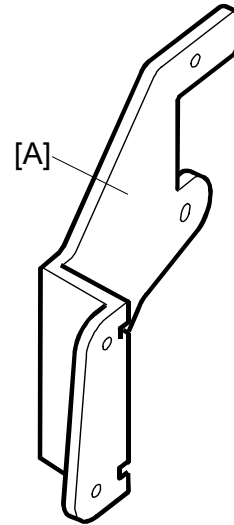
Index	Part No.	Description	Q'ty
1	C532 2221	Lower Tape Guide	1
2	C532 2222	Upper Tape Guide	1
3	C532 2224	Roller Shaft	1
4	C532 2223	Roller	1
5	C532 2238	Spring	1
6	C532 2229	Home Sensor Bracket	1
7	AW02 0021	Photointerruptor	1
8	C532 8110	Sensor Harness	1
9	C532 5800	Sepper Motor - DC24V	1
10	5203 1852	Bushinig - 6mm	1
11	C532 2205	Tape Cover	1
12	C532 2228	Cutter Arm	1
13	C532 2206	Frame	1
14	C532 8001	Motor Drive Board	1
15	C532 2220	Feed Roller	1
16	C532 2215	Gear - 16Z	1
17	C532 2241	Motor Drive Board Bracket	1
18	C532 2210	Cutter Drive Shaft	1
19	C532 2212	2nd Gear - 23/48Z	1
20	C200 3604	Coupled Gear - 16T & 50T	1
21	5205 2612	Gear - 19Z	1
22	C532 2227	Cutter Cam	1
23	C532 2226	Cutter Cam Shaft	1
24	C532 2216	Gear - 26Z	1
25	C532 2230	Cutter A'ssy	1
26	5507 4452	Spacer - 5x8x0.5mm	1
27	C532 2237	Spring	1
28	C532 2233	Sheilding Plate	1
29	C532 2563	Decal - Tape Set	1
30	C532 2404	Lower Cover	1
31	C532 2111	Tape Maker Bracket	1
32	C532 2562	Decal - Manual	1
33	C532 8230	Tape Maker Harness	1
34	C532 8115	Main Switch	1
36	C532 8120	Push Switch	1
37	C532 2403	Upper Cover	1
38	C532 2009	Knob Screw - M4	2
39	C532 6501	Auxiliary Bracket (C226)	1
40*	C532 6502	PG Auxiliary Bracket (C238/C247)	1
*	C532 2563	Decal - Tape Set	1
*	C532 2562	Decal - Manual	1
101	0801 1135	Philips Pan Head Screw - M3x3	
103	0720 0040Z	Retaining Ring - M4	
104	0313 0050Z	Philips Screw - 3x5	
106	0720 0050Z	Retaining Ring - M5	
107	0710 0030Z	Hex Nut 3	
108	0720 0030Z	Retaining Ring - M3	
109	1105 0360	Clamp	
110	0622 0100E	Spring Pin - 2x10mm	
112	1106 0418	Cord Bushing	
114	0965 3005B	Tapping Screw W/T Flat Washer-M3x5	
115	0314 0250W	Philips Pan Head Screw - M4x25	
116	0354 0050Z	Tapping Screw - M4x5	
117	0710 0040W	Hexagon Nut - M4	
118	0708 0030B	Washer - M3	
119	0960 4008Z	Philips Flange Screw - M4 x 8	
120	0703 0040Z	Spring Washer - M4	

Model: PRIPORT PINKGOLD/PGB4**Date:** 21-May-03**No:** M-C238-020**Remarks for installing the Tape Marker on PINKGOLD/PGB4 models:**

As mentioned in the list above, a bracket [A] (C5326502) is required when installing the Tape Marker on the PINKGOLD and PGB4. The Tape Marker cut-in S/N are listed below.

Cut in Serial Numbers

Model Name	Code	Serial Number
Tape Marker type 20 (Ricoh)	C532-23	F1411200001
Tape Dispenser (Other)	C532-27	



C249A092.WMF

Model: PRIPORT PINKGOLD/PGB4

Date: 21-May-03

No: M-C238-020

CUT IN SERIAL NUMBERS

Model Name	V/Hz	Destination	Code	Serial Number	
Standard SD370	120/60	USA, Canada	C238-11	-	
Gestetner 5430	120/60	Taiwan	C238-13		
Ges 5430, Rex 1330, Nsa CP430	230/50	Europe	C238-22		
Gestetner 5430	230/50	Asia, etc.	C238-23		
Ricoh JP3800	230/50	China	C238-26		
Ricoh JP3000	230/50	Europe	C238-27		
Gestetner 5428C	230/50	China	C238-28		
Ricoh JP3000	230/50	Asia, etc.	C238-29		
Ricoh JP3000, Ges 5430, Savin 3260DNP	120/60	USA, Canada	C238-52		
Ricoh JP3000, Gestetner 5430	230/50	Latin America	C238-54		
Standard SD370	120/60	USA, Canada	C238-61		-
Gestetner 5430	120/60	Taiwan	C238-63		
Ges 5430, Rex 1330, Nsa CP430	230/50	Europe	C238-72		
Gestetner 5430	230/50	Asia, etc.	C238-73		
Ricoh JP3800	230/50	China	C238-76		
Ricoh JP3000	230/50	Europe	C238-77		
Gestetner 5428C	230/50	China	C238-78		
Ricoh JP3000	230/50	Asia, etc.	C238-79		
Ricoh JP3000, Ges 5430, Savin 3260DNP, Lanier LDD030	120/60	USA, Canada	C238-92		
Ricoh JP3000, Gestetner 5430	230/50	Latin America	C238-94		
Ricoh JP2800	230/50	China	C247-76	-	
Gestetner 5425C	230/50	China	C247-78		